

POWER CRANK

BATTERY



www.powercrank.com.au

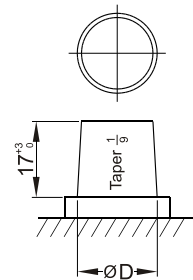
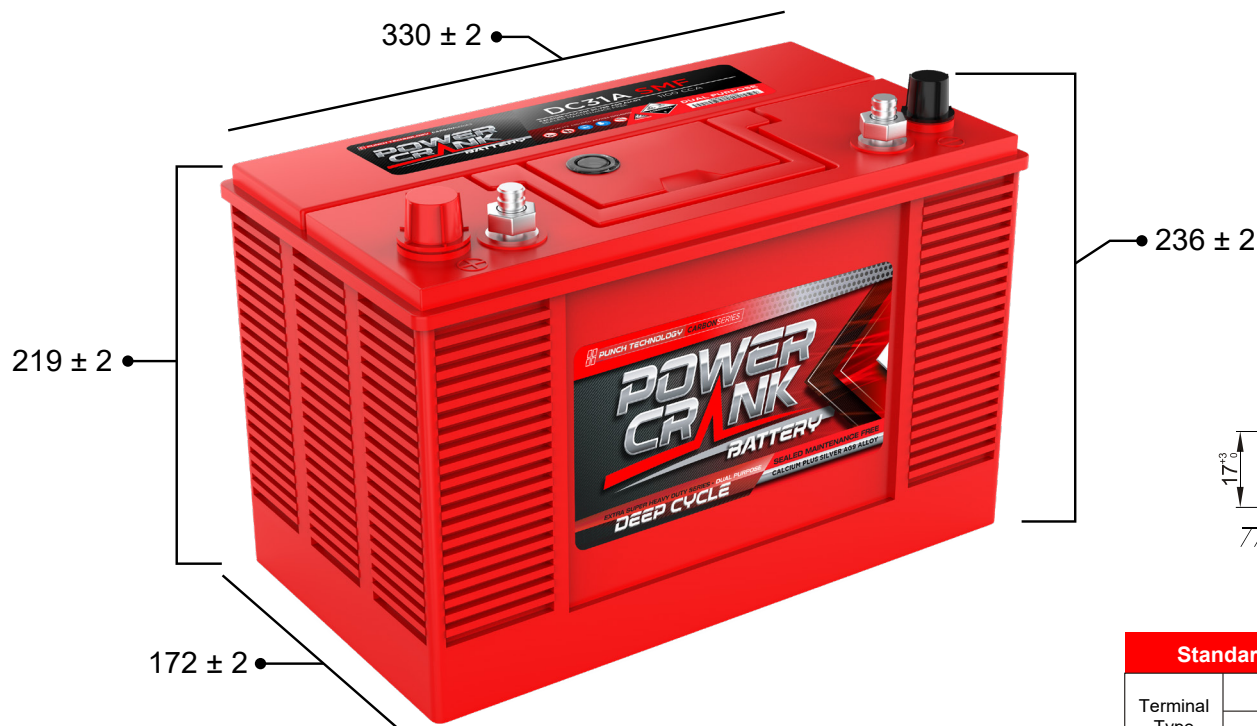


1800040009

SEALED MAINTENANCE FREE
CALCIUM PLUS SILVER AG9 ALLOY

Dimensions (mm)

DEEP CYCLE



Standard Terminal (mm)

Terminal Type	A	
	Positive	Negative
1	19.5 ⁰ _{-0.3}	17.9 ⁰ _{-0.3}

DC31A SMF 1100 CCA

Physical Specification (mm)

Nominal Voltage	12V
Dimension	
Length	330mm
Width	172mm
Container Height	219mm
Total Height(with Terminal)	236mm
Weight	Approx 26Kg
Acid	1.280±0.015g/cm ³ (25°C)
Standard Terminal	1
Cell layout	1
Hold-Down	B01

Electrical Specification

Cold Cranking Performance Amps@0°F(-18°C)	1100CCA
---	---------

Cell Layout

