

# NPC12V28AH 12V28AH

## VRLA BATTERY



General purpose application series

### Range Summary

Using oxygen recombination technology: maintenance-free  
 PbCaSn alloy for plate grids: low self discharge rate than 3% per month  
 High quality AGM separator: extend cycle life and prevent micro short circuit retardant  
 High purity raw material: 99.99% pure lead



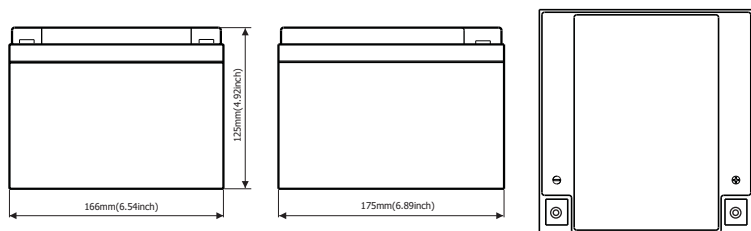
### Application

Cable Television  
 Communication Equipment  
 Security System

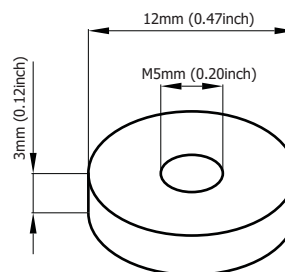
UPS  
 Control Equipment  
 Medical Equipment  
 Emergency Power



### Battery Dimensions

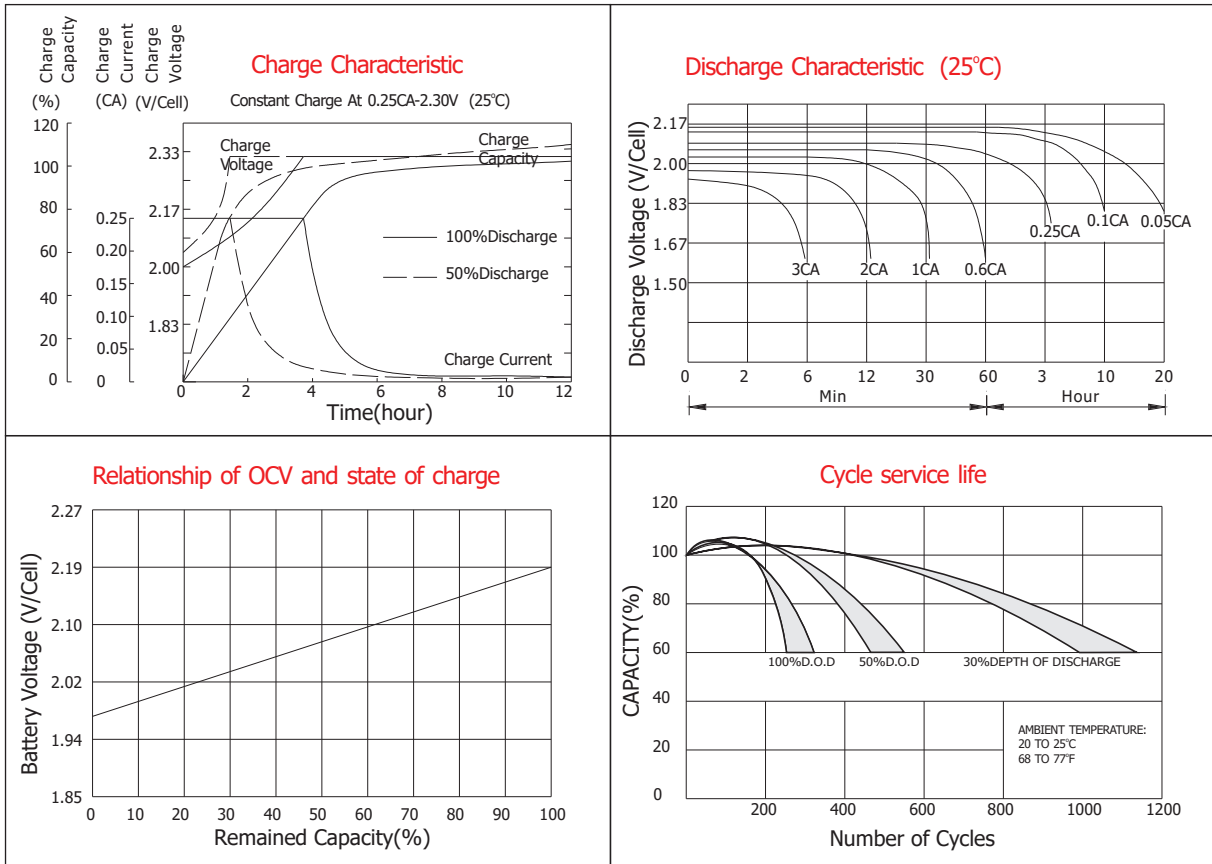


### Terminal Dimensions



### Technical Specifications

Battery Model	NPC12-28			
Designed Floating Life	5 Years			
Capacity(25°C)	20HR(1.48A,1.80V)	10HR(2.80A,1.80V)	5HR(4.74A,1.75V)	1HR(15.2A,1.60V)
	29.6AH	28.0AH	23.7AH	15.2AH
Dimensions	Length	Width	Height	Total Height
	175mm(6.89inch)	166mm(6.54inch)	125mm(4.92inch)	125mm(4.92inch)
Approx. Weight	9Kg (19.8 lbs)			
Internal Resistance	Full charged at 25°C: 0.01 Ohm			
Self Discharge	3% of capacity declined per month at (25°C)			
Capacity Affected by Temp.(20HR)	40°C	25°C	0°C	-15°C
	109%	100%	85%	65%
Charge Voltage(25°C)	Cycle use		Float use	
	14.4-14.8V(-30mV/ °C), max. Current:8.4A		13.6-13.8V(-20mV/ °C)	



### Constant current discharge ratings-amperes at 25°C

F.V/Time	5MIN	10MIN	15MIN	30MIN	1HR	3HR	5HR	10HR	20HR
1.60V	108	73.9	53.9	32.3	15.2	7.64	4.82	2.97	1.55
1.67V	97.0	67.5	52.4	31.4	15.0	7.62	4.80	2.92	1.54
1.70V	92.1	65.0	50.5	30.8	14.7	7.61	4.77	2.90	1.53
1.75V	81.9	60.1	47.7	30.2	14.2	7.56	4.74	2.85	1.52
1.80V	73.9	55.7	45.6	29.3	13.8	7.53	4.70	2.80	1.48
1.85V	56.1	45.9	39.4	26.9	13.5	7.50	4.66	2.75	1.39

### Constant power discharge ratings-watts at 25°C

F.V/Time	5MIN	10MIN	15MIN	30MIN	1HR	3HR	5HR	10HR	20HR
1.60V	178	122.6	95.5	61.0	36.4	14.90	9.71	5.94	3.10
1.67V	168.5	121.0	94.6	59.8	35.2	14.80	9.69	5.85	3.09
1.70V	157.4	118.0	93.0	58.2	34.3	14.60	9.68	5.80	3.08
1.75V	146.6	110.3	87.5	56.7	34.0	14.45	9.60	5.70	3.07
1.80V	131.5	102.6	82.2	55.1	33.4	14.25	9.44	5.60	2.97
1.85V	105.3	85.0	71.8	50.5	33.1	14.20	9.31	5.51	2.79