

# POWER CRANK BATTERY



www.powercrank.com.au

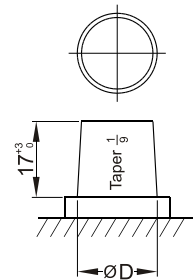


1800040009

SEALED MAINTENANCE FREE  
CALCIUM PLUS SILVER AG9 ALLOY

## Dimensions (mm)

## AUTOMOTIVE



Standard Terminal (mm)		
Terminal Type	A	
	Positive	Negative
1	19.5 <sup>0</sup> <sub>-0.3</sub>	17.9 <sup>0</sup> <sub>-0.3</sub>

# NS50 SMF 585 CCA

### Physical Specification (mm)

Nominal Voltage	12V
<b>Dimension</b>	
Length	231mm
Width	173mm
Container Height	186mm
Total Height(with Terminal)	203mm
Weight	Approx 15Kg
Acid	1.280±0.015g/cm <sup>3</sup> (25°C)
Standard Terminal	1
Cell layout	1
Hold-Down	B01

### Electrical Specification

Cold Cranking Performance Amps@0°F(-18°C)	585CCA
-------------------------------------------	--------

### Cell Layout

